

Make A Snowy Owl Pop-Up Card



Snowy Owl Pop-Up Card Directions

Materials: construction paper, scissors, glue stick, colored pencils

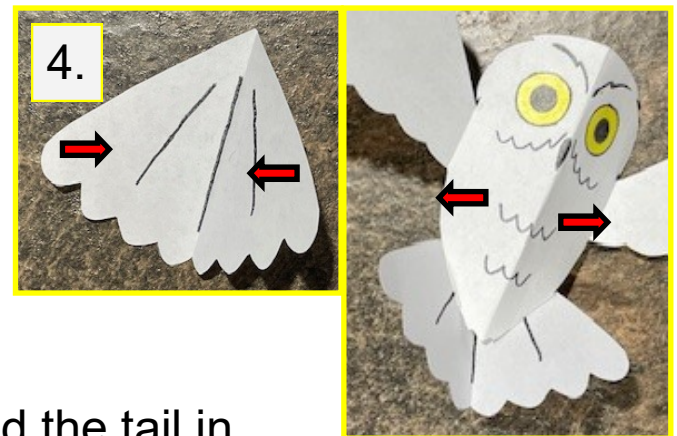
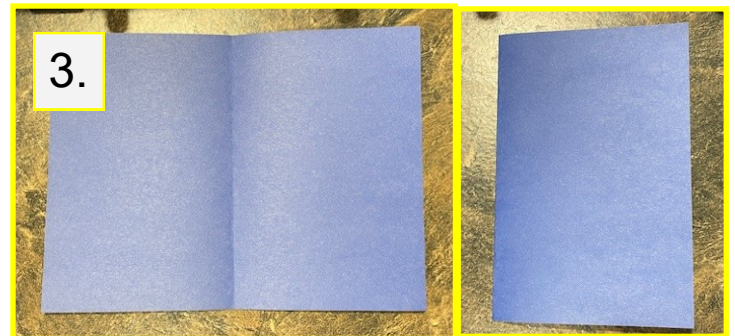
Directions:

1. Cut out your owl pieces. This includes the wings, the head, and the tail. Make sure to NOT cut off the tabs.



2. Color your owl with the colored pencils.

3. Fold the full sheet of construction paper in half and decorate it. Do this before making your owl to make sure the page is level and easier to color. Decorate your card however you would like! For example, "Owl love you always!" or "Owl miss you!" Make it your own!



4. Fold all of the tabs inwards. Fold the tail in half, with the lines being folded in. Fold the wings in half, with the lines being folded in. Fold the head/body in half the opposite way, with the lines being folded out.

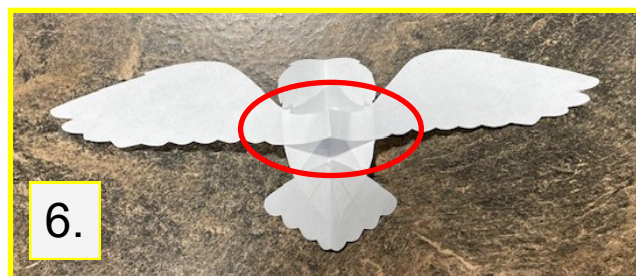


PLEASE LEAVE DIRECTIONS ON TABLE ~ THANKS, WH NATURE CENTER

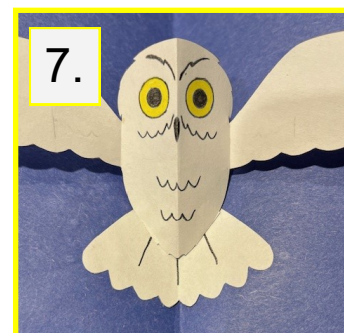
5. Glue the owl body to the inside of the tail using the bottom tabs on the body. The folds should be opposite.



6. Leaving about an inch of excess paper on each side, glue the wings to the back on the body on the remaining tabs. Leaving the excess paper in the middle will allow your owl to pop out and fold more easily.



7. Position the owl on the inside of your card. Make sure to practice folding it before gluing to ensure it is in a good spot. Glue the entire tail onto the card. This is the only part of the owl that should be glued to the construction paper.



8. You're done! Open and close your card to see your owl pop out!



PLEASE LEAVE DIRECTIONS ON TABLE ~ THANKS, WH NATURE CENTER

